

# QUIZ

## WHAT IS YOUR DIAGNOSIS?

### Case description

A 6-week-old girl was admitted to hospital because of a visible skin lesion that appeared on the back (3 × 5 cm) and was extending to the gluteal

area (Fig. 1). The lesion was rather thick on ultrasound examination (Fig. 2). Clinical suspicion of mastocytosis was made. Tissue sample was surgically taken and sent for histopathological examination (Fig. 3-4).



Fig. 1.

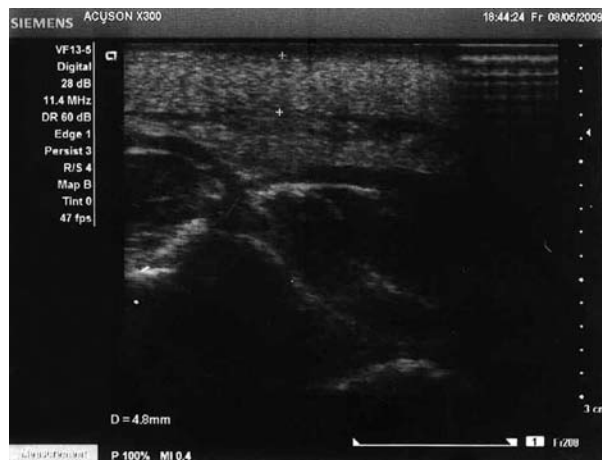


Fig. 2.

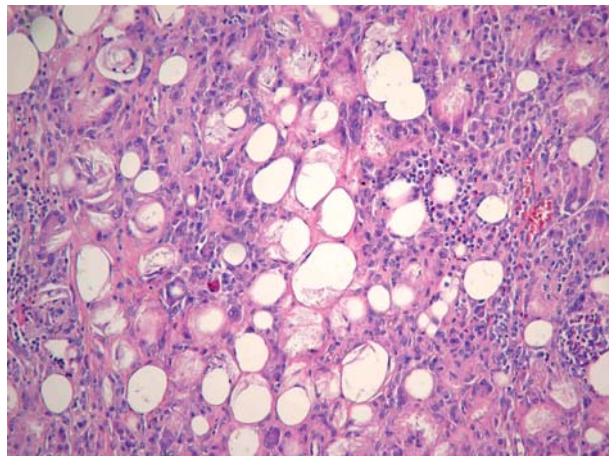


Fig. 3.

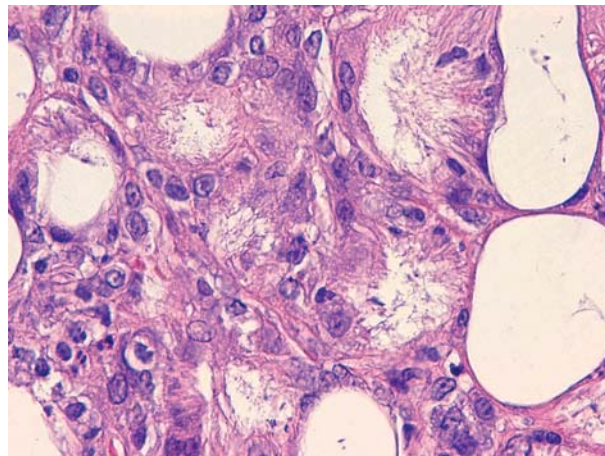


Fig. 4.

Andrzej Marszałek<sup>1,2</sup>, Monika Bowszyc-Dmochowska<sup>3</sup>, Igor Prokurat<sup>4</sup>, Joanna Maciejewska<sup>1</sup>

<sup>1</sup>Chair of Clinical Pathomorphology, *Collegium Medicum* in Bydgoszcz, Nicolaus Copernicus University, Poland, e-mail: amars@ump.edu.pl

<sup>2</sup>Chair of Clinical Pathomorphology, Poznań University of Medical Sciences, Poland

<sup>3</sup>Laboratory of Histopathology and Immunology, Chair and Clinic of Dermatology, Poznań University of Medical Sciences, Poland

<sup>4</sup>Chair of Pediatric Surgery, *Collegium Medicum* in Bydgoszcz, Nicolaus Copernicus University, Poland

Answers should be sent to the Editorial Office by 31.12.2010. The correct answer will be announced in the next issue of the *Polish Journal of Pathology*. All participants with the highest number of correct answers to the quizzes published in vol. 61 (4 issues) will be entered into the prize draw for a book.